

温州市华侨包装机械厂
WENZHOU HUAQIAO PACKING MACHINE FACTORY

内销部 Domestic Sales Department
地址：浙江省温州市空港新区港富路15号
ADD: NO.15 Gangfu Road, Konggang
New Area, Wenzhou, Zhejiang.
电话(TEL) : 0577-88633888 88631988
传真(FAX) : 0577-88628808

外贸部 International Department
电话(TEL) : +86-577-88998813
传真(FAX) : +86-577-88996613
<http://www.huaqiaopm.com>
E-mail:huaqiaopm@huaqiaopm.com

上海工厂 Shanghai Factory
地址：上海市嘉定区黄渡镇春浓路732号
ADD:NO.732 Chunnong Road,Huangdu Town
Jiading Area Shanghai
电话(TEL) : 021-69596266 69596268
传真(FAX) : 021-69596267
<http://www.afanlao.com>
E-mail:afanlao@afanlao.com

WENZHO

封箱机系列





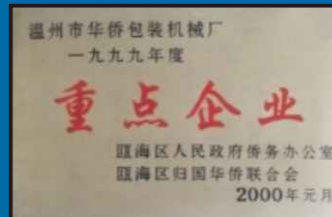
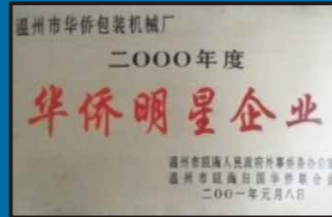
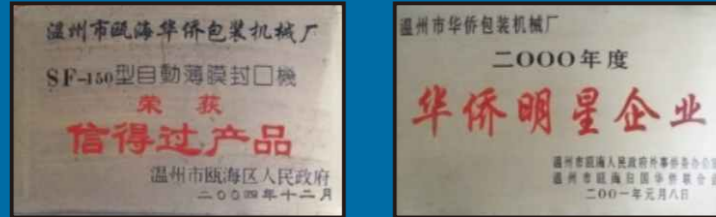
PROFILE
COMPANY
企业简介

温州市华侨包装机械厂成立于一九八七年，专业生产“捆霸牌”包装机械和食品机械等产品，公司技术力量雄厚、设备齐全、具有开发、研制、生产、销售及售后服务的完整体系。本公司主要产品有：塑料带捆扎机、自动封箱机、超声波自动封口机、真空包装机、墨轮印字封口机、多功能薄膜封口机、盒杯封盖机、打码机、移印机、吸塑包装机、贴体包装机、液体、颗粒、粉剂自动包装机、电磁感应封盖机。自动贴标机和流水线，设计制作等。我厂产品畅销全国二十九个省、市、自治区。并出口东南亚、中东、欧美等国家和地区。其中半自动捆包机已连年创中国销量之最。被中国产品质量协会推荐为“质量信得过产品”。企业通过了ISO9001国际质量体系认证。部分产品已通过欧盟的CE认证，并且是美国中央采购中心采购单位，我们始终本着“为客户创造价值”的核心价值观，不新开拓创新，奋发进取。力争为每一位客户提供品质卓越的产品及完美周到的售前售后服务。我们致力于新产品开发、质量的提高及今后服务的完善，“坚持不懈地力求完美”是我们的宗旨，针对国内外市场的需求，我们不断地开发质优价廉的各类包装机械，广泛应用于各行业。“只有客户的成功、才有华侨的发展”。华侨企业竭诚与国内外各界客商携手合作，共同迈向成功！

Wenzhou Huaqiao Packing Machine Factory, the owner of KUNBA brand, established in 1987 is a professional manufacturer specialized in vacuum packing machine, sealing machine, carton sealer, date printing machine, strapping machine, cup sealer, shrink tunnel, induction foil sealer, liquid/semi-liquid filling machine. We are located near the wenzhou airport with convenient transportation. All of our products comply with international quality standards and are greatly appreciated in a variety of different markets throughout the world.

COMPANY HONOR

公司荣誉



- ◆ Devote to Packing Machine since 1987.
- ◆ 90000 square meters , 150 employees.
- ◆ Over 10 million dollars annual sales, 60% export to worldwide.
- ◆ well-equipped facilities and excellent quality control
- ◆ ISO9001:2008 CE certificate approved.
- ◆ OEM and customized -design service supplied.

WORKSHOP OVERVIEW

车间概览

一流的技术设备，一流的生产配置，是现代企业必不可少的硬件，也是制造优质产品的保证。我们公司持续购进先进的生产设备，引进新材料、新工艺，使产品大众化、品质化。技术专家直接参与技术指导及生产，保证了产品的稳定性和可靠性。员工与日俱增的精品意识和源源不断的工业精品另世界包装业日新月异。

我们以客户为导向，以研究和制造客户需要的、满意的产品为己任。我们凭借其技术的优势和先进的生产工艺、产品开发的能力，把技术研究水平和生产工艺发挥的淋漓尽致。从而让客户得到真正的认同和赞赏。



加工设备 PROCESSING EQUIPMENT

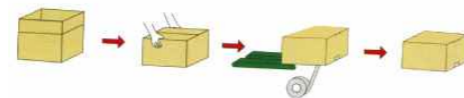
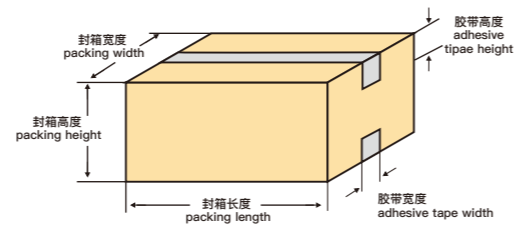


FJ 胶带封箱机系列

ADHESIVE TAPE CARTON SEALING MACHINE

捆霸牌系列真空机广泛应用于食品、五金、医药、化工、水产品、电子元器件等行业，适合各种形态产品（固态、液态、粉末、糊状）的真空包装。可有效防止产品因氧化或者细菌繁殖引起的腐败变质，从而达到延长产品保护和存储时间的目的。

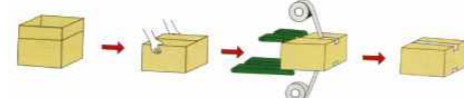
KUNBA Series of tape sealing machine is widely used in all kinds of cartons of adhesive tape sealing packaging, solid and durable, firm sealing, can greatly improve the manufacturer's packaging efficiency, save labor costs, is the first choice for mass production.



下驱动封箱机 FJ-50
Bottom carton sealer driven

技术参数technology parameters

型号/Model	FJ-50	封箱长度/Packing Length	≥200mm
电源电压/Power Supply	AC 220V/50HZ 110V/60HZ	封箱宽度/Packing Width	180-500mm
电机功率/Power Consumption	90w	外包装尺寸/Shipment Dimension	980x820x730mm
输送速度/Conveying speed	≤20m/min	净重/毛重/N.W&G.W	90kg/110kg
胶带尺寸/Adhesive tape size	48-60mm		



上下驱动封箱机 FJ-6050L
Top-bottom Driven Carton Sealer

技术参数technology parameters

型号/Model	FJ-6050L	封箱长度/Packing Length	≥200mm
电源电压/Power Supply	AC 220V/50HZ 110V/60HZ	封箱宽度/Packing Width	180-500mm
电机功率/Power Consumption	90Wx2	封箱高度/Packing Height	110-650mm
输送速度/Conveying speed	≤20m/min	外包装尺寸/Shipment Dimension	980x820x1190mm
胶带尺寸/Adhesive tape size	48-60mm	净重/毛重/N.W&G.W	118kg/153kg

中国专利号
Z102258105.7
FJ6050(轻物型)

FJ 胶带封箱机系列

ADHESIVE TAPE CARTON SEALING MACHINE

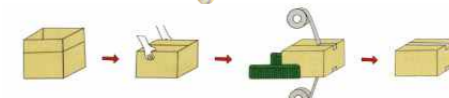


左右驱动封箱机(上侧) FJ-4550S
Left-right driven carton sealer(side)

技术参数technology parameters

型号/Model	FJ-4550S	封箱长度/Packing Length	≥200mm
电源电压/Power Supply	AC 220V/50HZ 110V/60HZ	封箱宽度/Packing Width	100-500mm
电机功率/Power Consumption	120Wx2	封箱高度/Packing Height	110-650mm
输送速度/Conveying speed	≤20m/min	外包装尺寸/Shipment Dimension	910x910x1210mm
胶带尺寸/Adhesive tape size	48-60mm	净重/毛重/N.W&G.W	125kg/148kg

中国专利号
Z102258105.7
FJ6050S(窄物型)



左右驱动封箱机 FJ-6050S
Left-right driven carton sealer

技术参数technology parameters

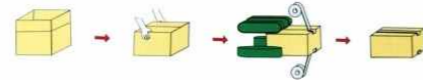
型号/Model	FJ-6050S	封箱长度/Packing Length	≥200mm
电源电压/Power Supply	AC 220V/50HZ 110V/60HZ	封箱宽度/Packing Width	100-500mm
电机功率/Power Consumption	120Wx2	封箱高度/Packing Height	110-650mm
输送速度/Conveying speed	≤20m/min	外包装尺寸/Shipment Dimension	1170x1000x1190mm
胶带尺寸/Adhesive tape size	48-60mm	净重/毛重/N.W&G.W	165kg/225kg

中国专利号
Z102258105.7
FJ6050(全方位型)

FJ 胶带封箱机系列
ADHESIVE TAPE CARTON SEALING MACHINE



上左右驱动封箱机 FJ-6050A
Top-left-right-driven carton sealer

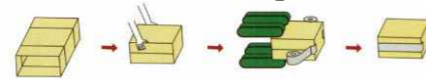


技术参数technology parameters

型号/Model	FJ-6050A	封箱长度/Packing Length	≥200mm
电源电压/Power Supply	AC 220V/50HZ 110V/60HZ	封箱宽度/Packing Width	100-500mm
电机功率/Power Consumption	120Wx2+90W	封箱高度/ Packing Height	110-650mm
输送速度/Conveying speed	≤20m/min	外包装尺寸/Shipment Dimension	1170x1000x1190mm
胶带尺寸/Adhesive tape size	48-60mm	净重/毛重/N.W&G.W	168kg/228kg



上下驱动侧封封箱机 FJ-4042
Top-bottom Driven Side Carton Sealer



技术参数technology parameters

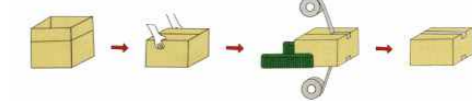
型号/Model	FJ-4042	封箱长度/Packing Length	≥200mm
电源电压/Power Supply	AC 220V/50HZ 110V/60HZ	封箱宽度/Packing Width	150-430mm
电机功率/Power Consumption	120W+90W	封箱高度/ Packing Height	100-450mm
输送速度/Conveying speed	≤20m/min	外包装尺寸/Shipment Dimension	1170x1000x1190mm
胶带尺寸/Adhesive tape size	48-60mm	净重/毛重/N.W&G.W	180kg/240kg

FJ 胶带封箱机系列
ADHESIVE TAPE CARTON SEALING MACHINE



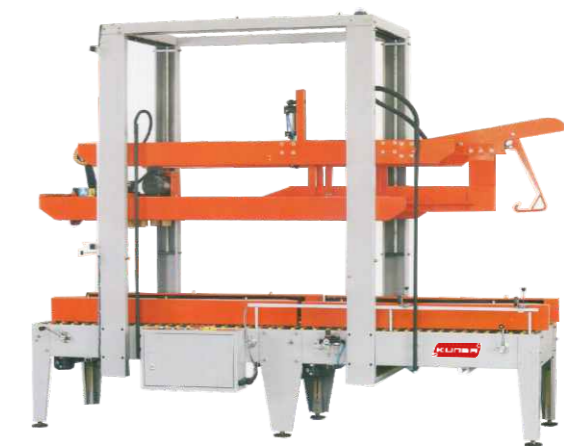
自动下左右驱动折盖封箱机 FJ-5050A
Top-bottom driver side carton sealer

中国专利号
Z102258105.7
FJ5050(自动折盖型)

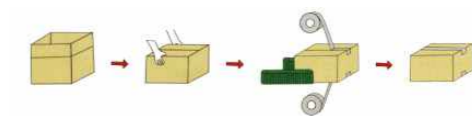


技术参数technology parameters

型号/Model	FJ-5050A	封箱长度/Packing Length	200-650mm
电源电压/Power Supply	AC 220V/50HZ 110V/60HZ	封箱宽度/Packing Width	100-500mm
电机功率/Power Consumption	250Wx2	封箱高度/ Packing Height	170-800mm
输送速度/Conveying speed	≤20m/min	外包装尺寸/Shipment Dimension	2100x1150x1560mm
胶带尺寸/Adhesive tape size	48-60mm	净重/毛重/N.W&G.W	285kg/367kg



自动下左右驱动折盖封箱机 FJ-5050L
Top-bottom driver side carton sealer



技术参数technology parameters

型号/Model	FJ-5050L		
电源电压/Power Supply	3P 380V 50Hz/60Hz	1370W	
封口速度/Sealing speed	8-10 cartons/min		
胶带尺寸/Adhesive tape size	48-72mm(kraft or bopp tape)		

FJ 胶带封底 (角) 机系列

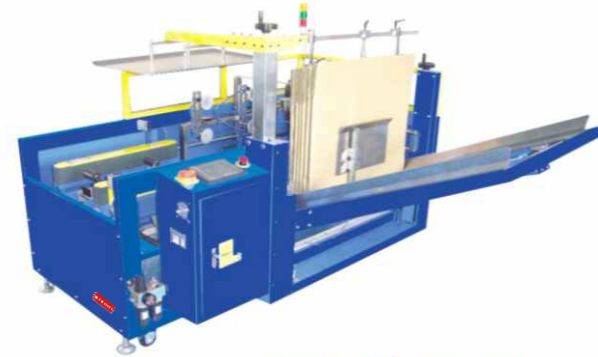
A DHEISIVE TAPE CARTON SEALING MACHINE

开箱封底机 FJ-4035

Open carton sealing bottom machine

对纸质纸箱之开箱成型、封底效果极佳。纸箱储存采用立式随时补充空纸箱。吸箱、成型、封底均自动处理一气呵成。不同尺寸之纸箱由手把操作调整迅速。标准规格品，零件随时供应。

It's a good kind of machine that can finish the work;carton opening,shapping,folding and sealing the bottom of the carron at aheat.As it's very easy to adjust the size of the cartons anytime.Standard products and spare parts can be supplied anytime.



技术参数technology parameters

型号/Model	FJ-4035 (开箱型)	胶带宽度/Adhesive Tape Width	48-60mm
电源电压/Power Supply	AC 220-380V/60-50HZ	封箱长度/Packing Length	<450mm
电机功率/Power Consumption	240W	使用气源/Pneumatic	5~6kg/cm ² 150Ne/min
输送速度/Conveying speed	每小时60-720箱 (ctns/hr)	外包装尺寸/Shipment Dimension	2200x2100x1400mm
封箱口味/Adhesive tape size	开箱封底	毛重/Gross Weight	约420kg

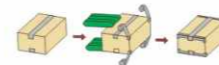
多驱动角边机 FJ-5040

Top-bottom-left-right carton edge sealing bottom machine

纸箱上下一字型胶带封妥后，90度转角进入FJ-5040，角边上下四条胶带一次封箱完成。

采用特殊设计，胶带粘贴、抚平、整齐美观。坚固耐用，适合全天候大量使用。拥有FJ-5040手动调整及FJ-5040A全自动调整二种机型。

This kind of machine use special design,four corner sides of carton can be sealed at one time,with smooth and elegant outlook.It's adamantine and durable,suitable for whole day's rich use.We have two type of machine;FJ-5040Manual adjusting and FJ-5040A Automatic adjusting.



技术参数technology parameters

型号/Model	FJ-5040 (封角型)	胶带宽度/Adhesive Tape Width	48-60mm
电源电压/Power Supply	AC 220-380V/60-50HZ	封箱长度/Packing Length	>30mm
电机功率/Power Consumption	360W	使用气源/Pneumatic	5~6kg/cm ² 150Ne/min
输送速度/Conveying speed	15m/min	外包装尺寸/Shipment Dimension	2200x1400x1700mm
封箱口味/Adhesive tape size	左右上下角边	毛重/Gross Weight	约520kg

输送线系列

CONVEYOR SERIAIS



SSX-D01电动可伸缩输送线 (滚筒型)

SSX-D01 Rerractable conveyor with motor

可伸缩正反转动输送线数字显示，速度可调；输送方向可调，正反转，伸缩长度890-2000mm

技术参数technology parameters

型号/Model	SSX-D01
电源电压/Power Supply	AC 220/50HZ-110/60HZ
总功率/Consumption	360W
机器尺寸/Machine Size	900x900x570mm

无动力可伸缩输送线 (滚筒型)

Retractable conveyor without motor

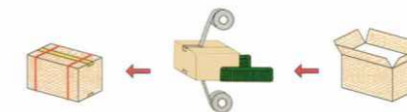
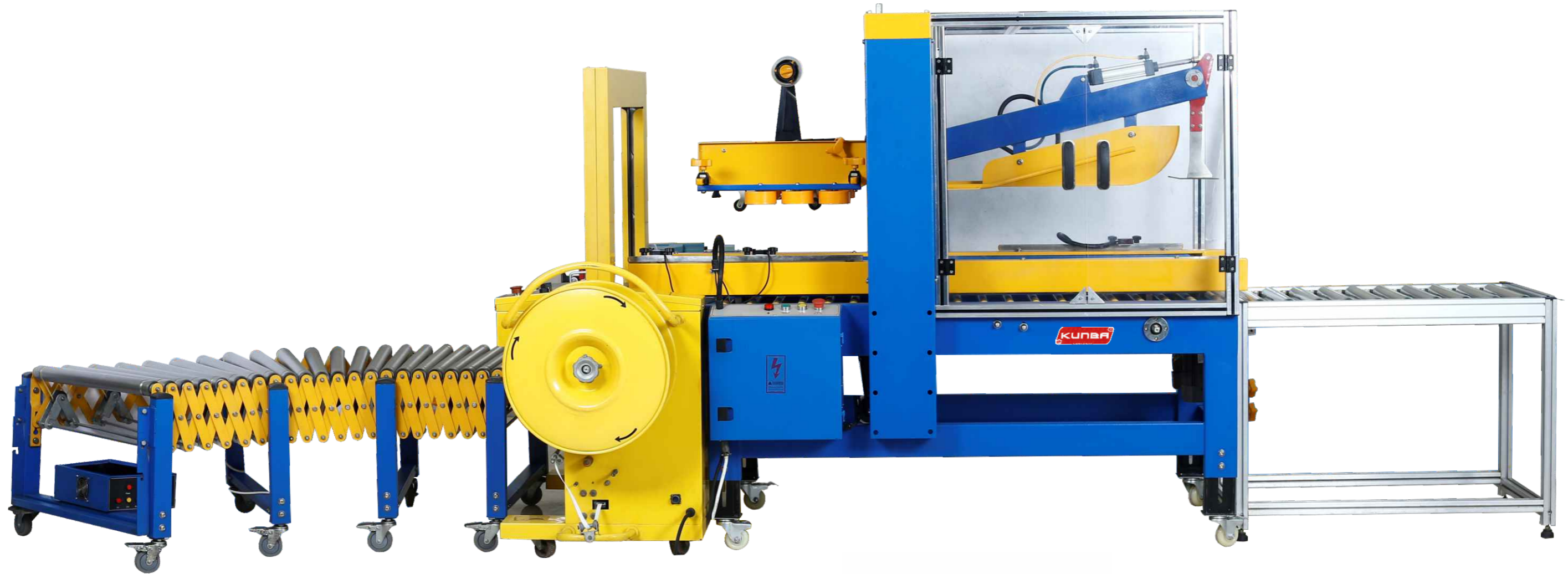


固定输送线
Conveyor line



无动力可伸缩输送线 (滚轮型)
Retractable conveyor without motor

FJ 系列纸箱封箱捆扎包装线 AUTOMATIC CARTON PACKING LINE



全自动折盖封箱捆扎流水线 Automatic flap sealing strapping packing line

特性/Features

封箱打包流水线广泛应用于工厂的无人化车间的大批量生产，自动化程度高，能够实现自动进箱、纸箱折盖、胶带封箱、捆扎带打包、出箱的包装工序，技术先进，质量可靠，是您值得信赖的产品。

Features:carton sealing and packing line is widely used in factory assembly line of unmanned large-scale production workshop,High degree of automation,can achieve automatic feed box,carton folding cover,,sealing,packing,out of box packaging process,Advanced technology, reliable quality and reliable products for your.

配置/Configuration

全自动捆扎机SK-2A, Automatic strapping machine SK-2A
全自动折盖封箱机FJ5050 Automatic flap carton sealer FJ5050
可伸缩正反转动力流水线 Extended motor-drive roller conveyor

可选择配置/Options

自动装箱机/Automatic carton filler
任意长度的动力输送机/More longer motor-drive roller conveyor
全自动捆扎机/Automatic strapping machine
码垛机/Automatic palletizer
自动薄膜缠绕机/Automatic pallet stretch wrapping machine
可伸缩正反转动力流水线/Extended motor-drive roller conveyor

半自动捆扎机系列

SEMI-AUTOMATIC STRAPPING MACHINE SERIES

捆霸牌系列捆扎机是使用打包带缠绕产品或包装件，然后收紧将两端通过热效应熔融或使用包扣等材料连接的机器。打包机的使用是使塑料带能紧贴于捆扎包件表面，保证包件在运输、贮存中不因捆扎不牢而散落，广泛适用于各行各业。

KUNBA strapping machine takes polythene plastic strap as binding material, which is mainly used in binding paper carton, wooden box and paper parcels in sectors of business, postal service, railway, bank, food, pharmaceutical and publishing.



自动捆扎机 KZB-I
Strapping machine

技术参数technology parameters

型号/Model	KZB-I	捆扎带宽/Strap Width	9-15mm
电源电压/Power Supply	AC 220-240V/50HZ	外包装尺寸/Shipment Dimension	925x585x810mm
总功率/Power Consumption	250W	毛重/Gross Weight	85kg
捆扎速度/Capacity	1.8秒(S)/道(time)		
捆扎力/Strapping Tension	40-480N可调(Adjustable)		



自动捆扎机 KZB-II
Strapping machine

技术参数technology parameters

型号/Model	KZB-II	捆扎带宽/Strap Width	9-15mm
电源电压/Power Supply	AC 220-240V/50HZ	外包装尺寸/Shipment Dimension	1470x580x510mm
总功率/Power Consumption	250W	毛重/Gross Weight	80kg
捆扎速度/Capacity	1.8秒(S)/道(time)		
捆扎力/Strapping Tension	40-480N可调(Adjustable)		

半自动捆扎机系列

SEMI-AUTOMATIC STRAPPING MACHINE SERIES



可调型自动捆扎机
Adjustable semi-automatic strapping machine

技术参数technology parameters

型号/Model	KZB-I	捆扎带宽/Strap Width	9-15mm
电源电压/Power Supply	AC 220-240V/50HZ	外包装尺寸/Shipment Dimension	895x580x730mm
总功率/Power Consumption	250W	毛重/Gross Weight	110kg
捆扎速度/Capacity	1.8秒(S)/道(time)		
捆扎力/Strapping Tension	40-480N可调(Adjustable)		



可调型自动捆扎机
Adjustable semi-automatic strapping machine

技术参数technology parameters

型号/Model	KZB-II	捆扎带宽/Strap Width	9-15mm
电源电压/Power Supply	AC 220-240V/50HZ	外包装尺寸/Shipment Dimension	1470x580x505mm
总功率/Power Consumption	250W	毛重/Gross Weight	90kg
捆扎速度/Capacity	1.8秒(S)/道(time)		
捆扎力/Strapping Tension	40-480N可调(Adjustable)		

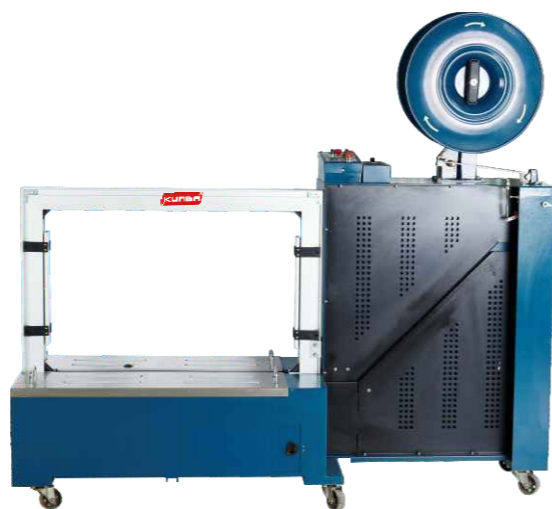
自动捆扎机系列
AUTOMATIC STRAPPING MACHINE



全自动捆扎机 SK-2A
Automatic strapping machine

技术参数technology parameters

型号/Model	SK-2A	PP包带/Tape Width	厚Thickness(0.6-1.2)mm 宽Width(9-15)mm
电源电压/Power Supply	AC3φ380V/50Hz	外包装尺寸/Shipment Dimension	400x590x1500mm
总功率/Power Consumption	0.75KW	毛重/Gross Weight	220kg
捆扎速度/Strapping Speed	≤2.5秒(S)/道(time)		
捆包拉力/Strapping Tension	80kgs		



全自动捆扎机 MH-101B
Automatic strapping machine

技术参数technology parameters

型号/Model	MH-101B	捆包拉力/Strapping Tension	5-38kgs
电源电压/Power Supply	AC3 380V/50HZ	PP包带/Tape Width	厚Thickness(0.6-1.2)mm 宽Width(9-15)mm
总功率/Power Consumption	0.75kw	外包装尺寸/Shipment Dimension	1810x640x1570mm
捆扎速度/Strapping Speed	≤2.5秒(S)/道(time)	毛重/Gross Weight	290kg
捆扎尺寸/Strapping Size	宽800mm*高度根据需要定 can make especia size acording to your order		

备注

**坚持不懈
力求完美**

CONSTANTLY STRIVE
TO PERFECT

只有客户的成功、才有华侨的发展

本厂有权保留对机器技术参数的修改 不另行通知
(Huaqiao reserve the right to change technical parameters without previous advice)